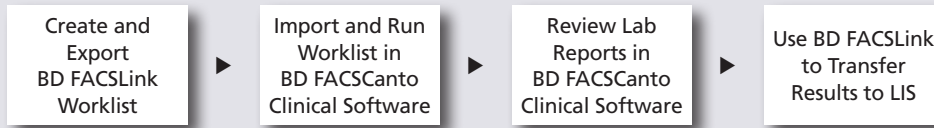


Quick Reference Guide for Using BD Panels with BD FACSCanto Clinical Software and the BD FACSLink LIS Interface

This guide contains instructions for using BD panels created in BD FACSCanto™ clinical software* v2.4 with the BD FACSLink™ laboratory information (LIS) system interface.

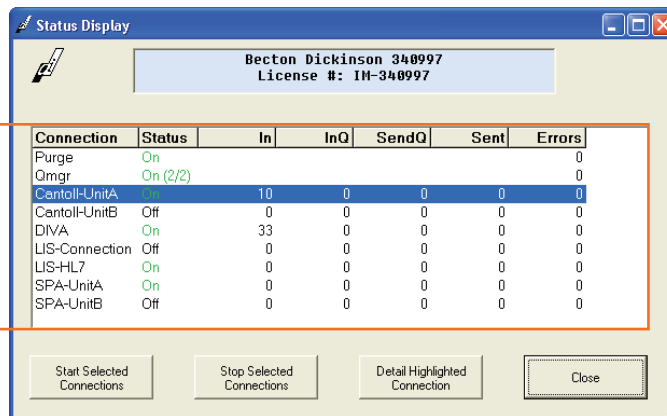
Workflow Overview



Helping all people live healthy lives

Creating and Exporting a Worklist in BD FACSLink (Instrument Manager) Software

- 1 Start Instrument Manager software and log in.
- 2 Select the appropriate connection in the **Status Display** dialog.

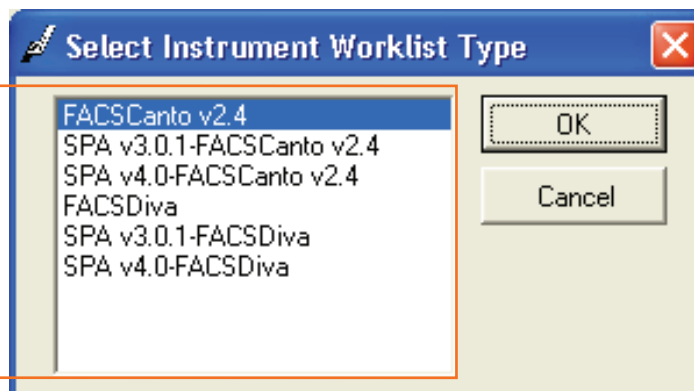


Select the **Cantoll** connection you want and then click the **Detail Highlighted Connection** button.

- 3 Display the **BD FACSLink** window and create a new worklist.



Click the **New Worklist** button.

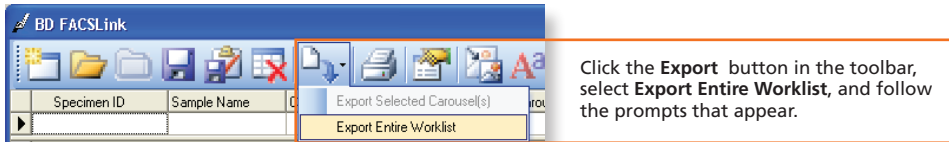


* BD FACSCanto and BD FACSCanto II flow cytometers are for In Vitro Diagnostic Use.

- Enter the appropriate information in the **Specimen ID** and **Carousel ID** fields for each specimen.

Specimen ID	Sample Name	Case Number	Panel	Carousel ID	Start	End	Unique Carousel ID	Tube Type	Primary Rack Position
a1234		a12341	6 Color TBNK + ...	1	TBD	TBD		BD Vacutainer	TBD

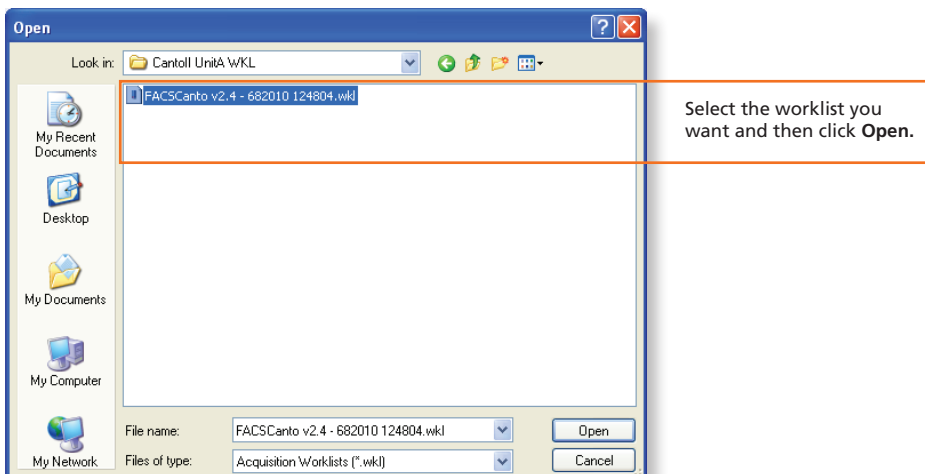
- Export and save the worklist.



- Exit BD FACSLink software.

Importing and Running a BD FACSLink Worklist in BD FACSCanto Clinical Software

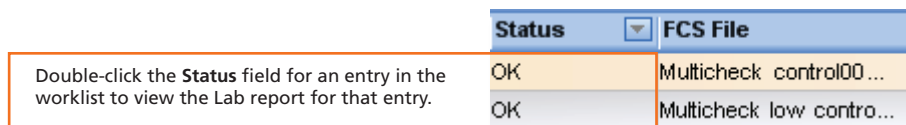
- Start BD FACSCanto clinical software and log in.
- Select **File > Open Worklist**.



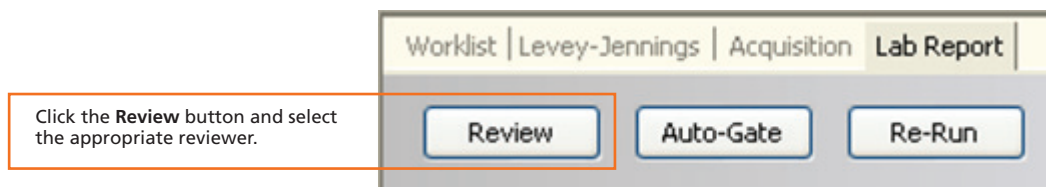
- Verify that information in the worklist is correct.
- Run the worklist.

Reviewing Lab Reports in BD FACSCanto Clinical Software

- 1 View the Lab report for each entry in the worklist.

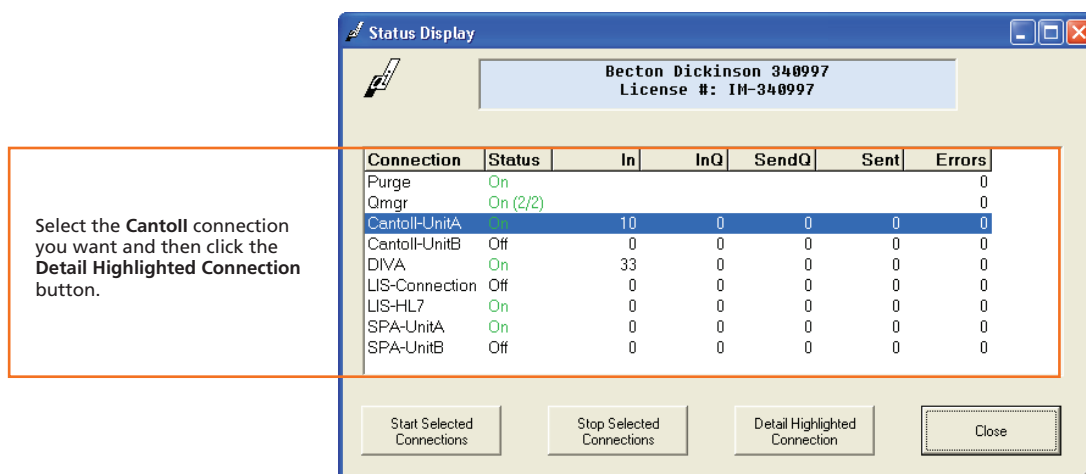


- 2 Inspect plots, gates, and QC messages on the Lab report.
- 3 If needed, manually adjust gates.
- 4 (Optional) When all reports have been reviewed, append a virtual signature to reviewed reports.



Transferring Results to the LIS

- 1 Start Instrument Manager software and log in.
- 2 Select the appropriate **Cantoll** connection in the **Status Display** dialog.



- 3 Display the **BD FACSLink** window and transfer results.



- 4 Exit the software.